

Malignant Tumors of the Jaws

1. Squamous cell carcinoma
2. Metastatic carcinoma
3. Sarcomas
4. Leukemia
5. Multiple myeloma
6. Malignant lymphomas
7. Burkitt's lymphoma

Fig. 16-1

Squamous cell carcinoma producing destruction of bone around the left mandibular molar giving it a "tooth floating in space" appearance. Notice the diffuse and irregular borders of the lesion.

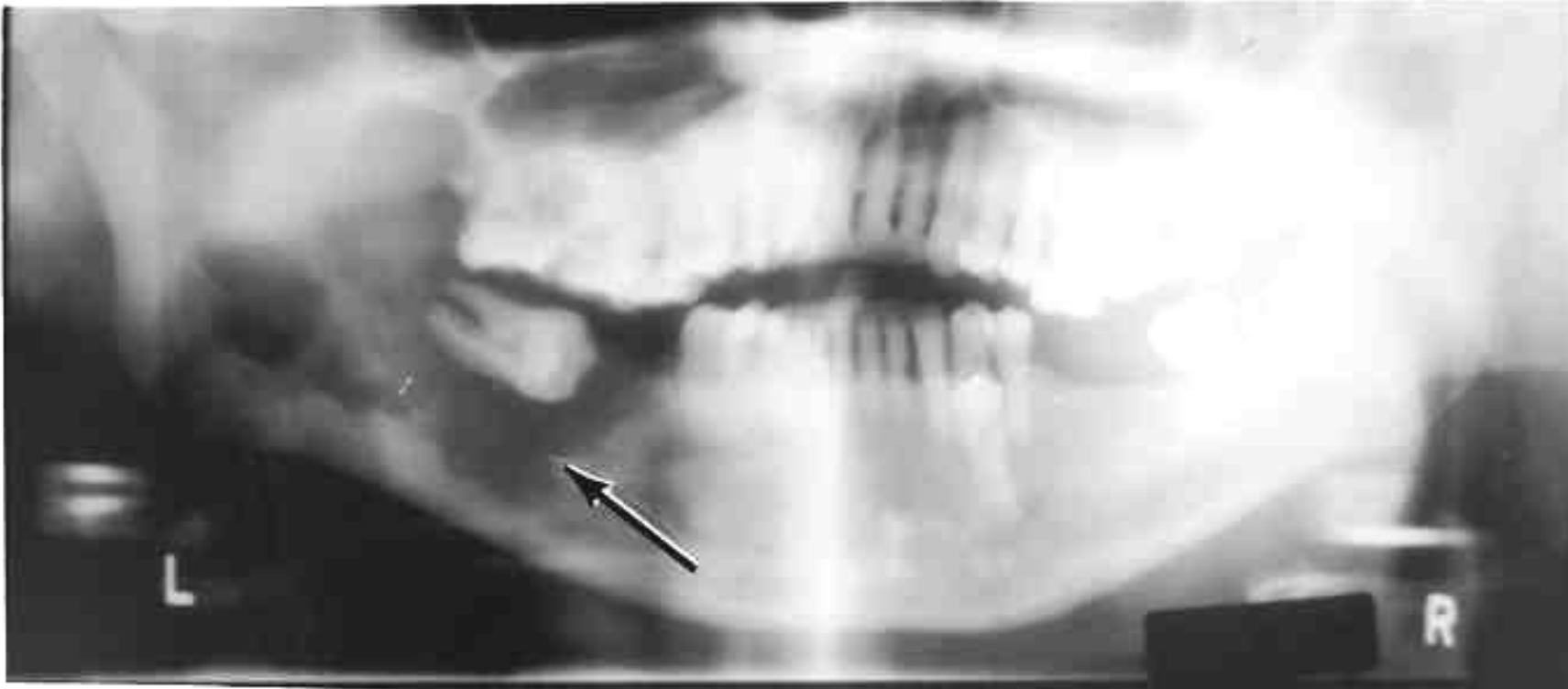


Fig. 16-2A

Squamous cell carcinoma shows bone destruction in the mandibular right molar region.

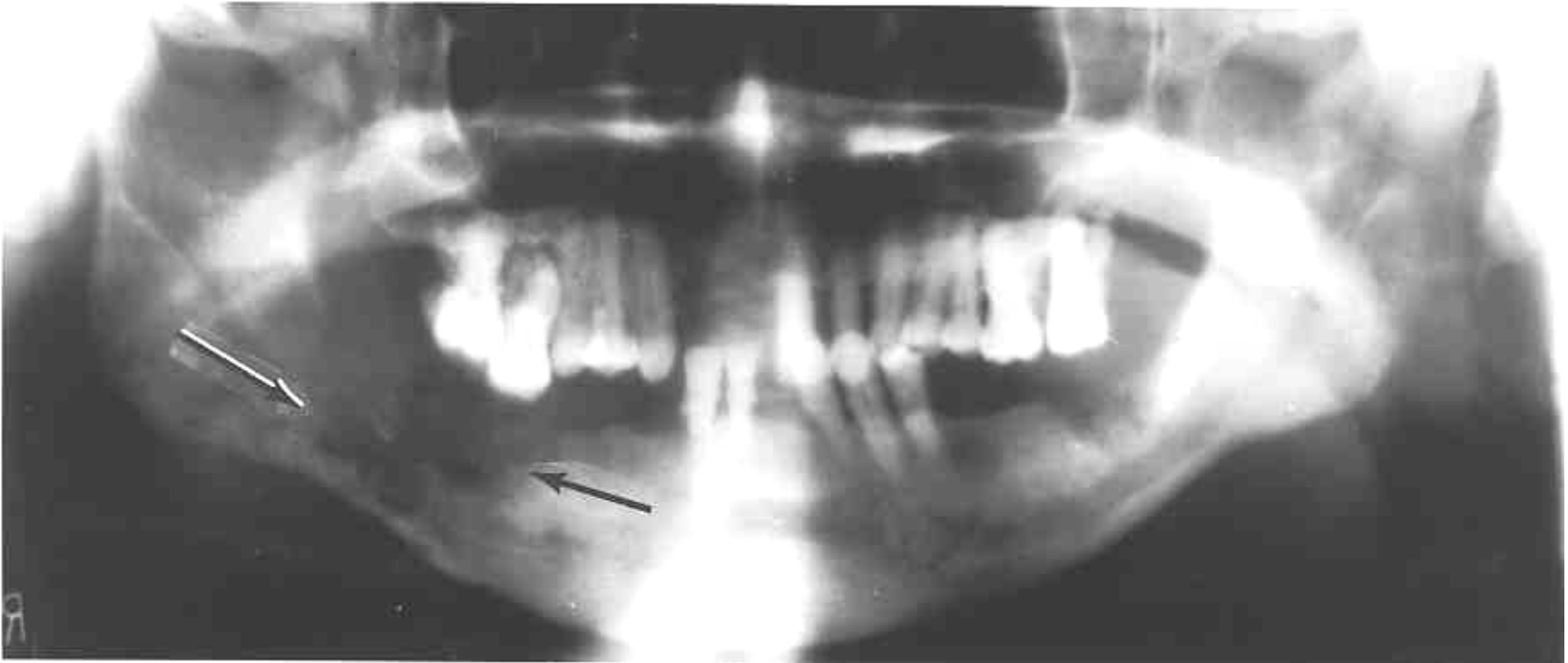




Fig. 16-2B

Close-up of illustration.

Squamous cell carcinoma of the alveolar ridge and surrounding mandibular bone.

Notice the diffuse and irregular borders of the lesion.

Fig. 16-2C

The same squamous cell carcinoma after extraction of all the teeth. The radiograph was taken one month later and shows extensive bone destruction.

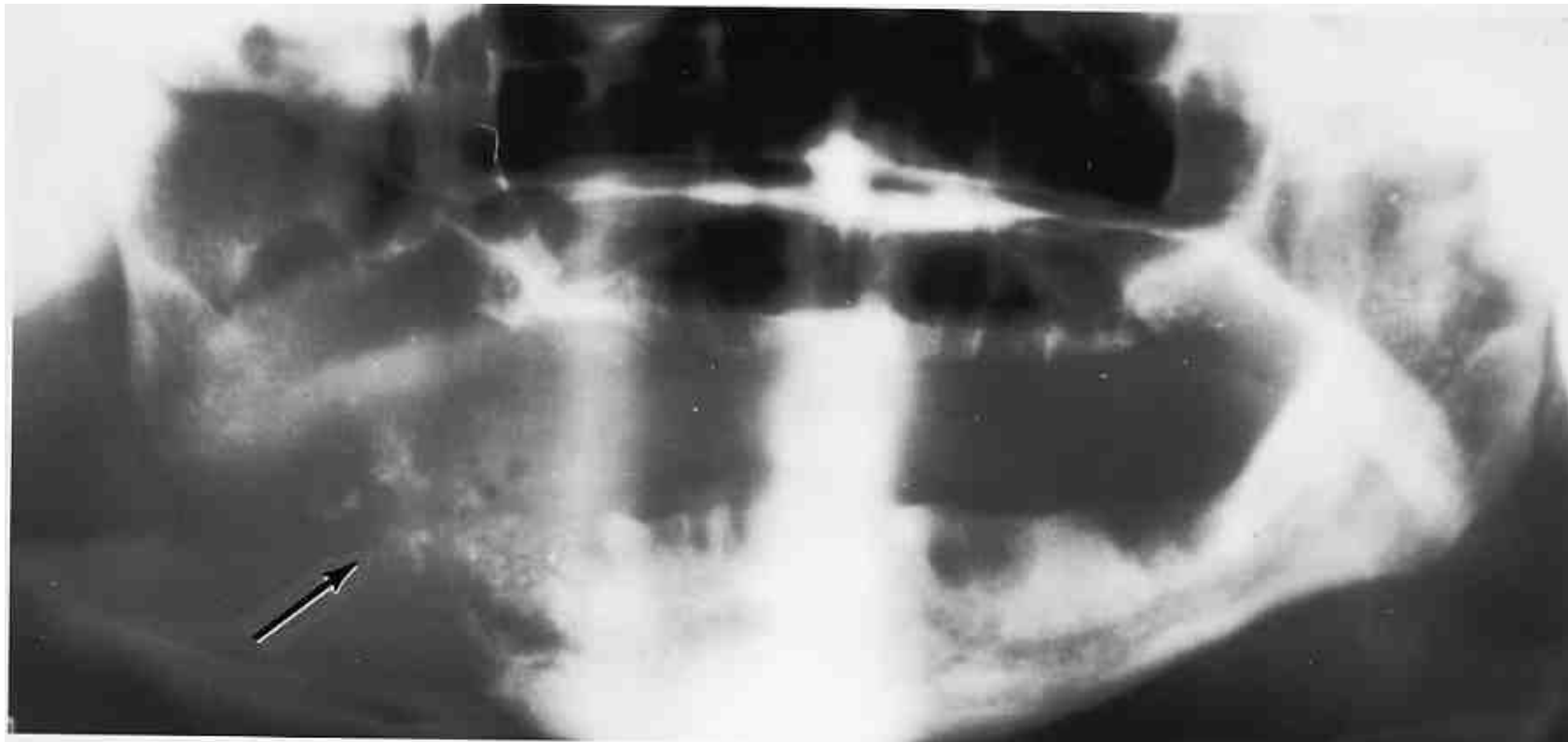
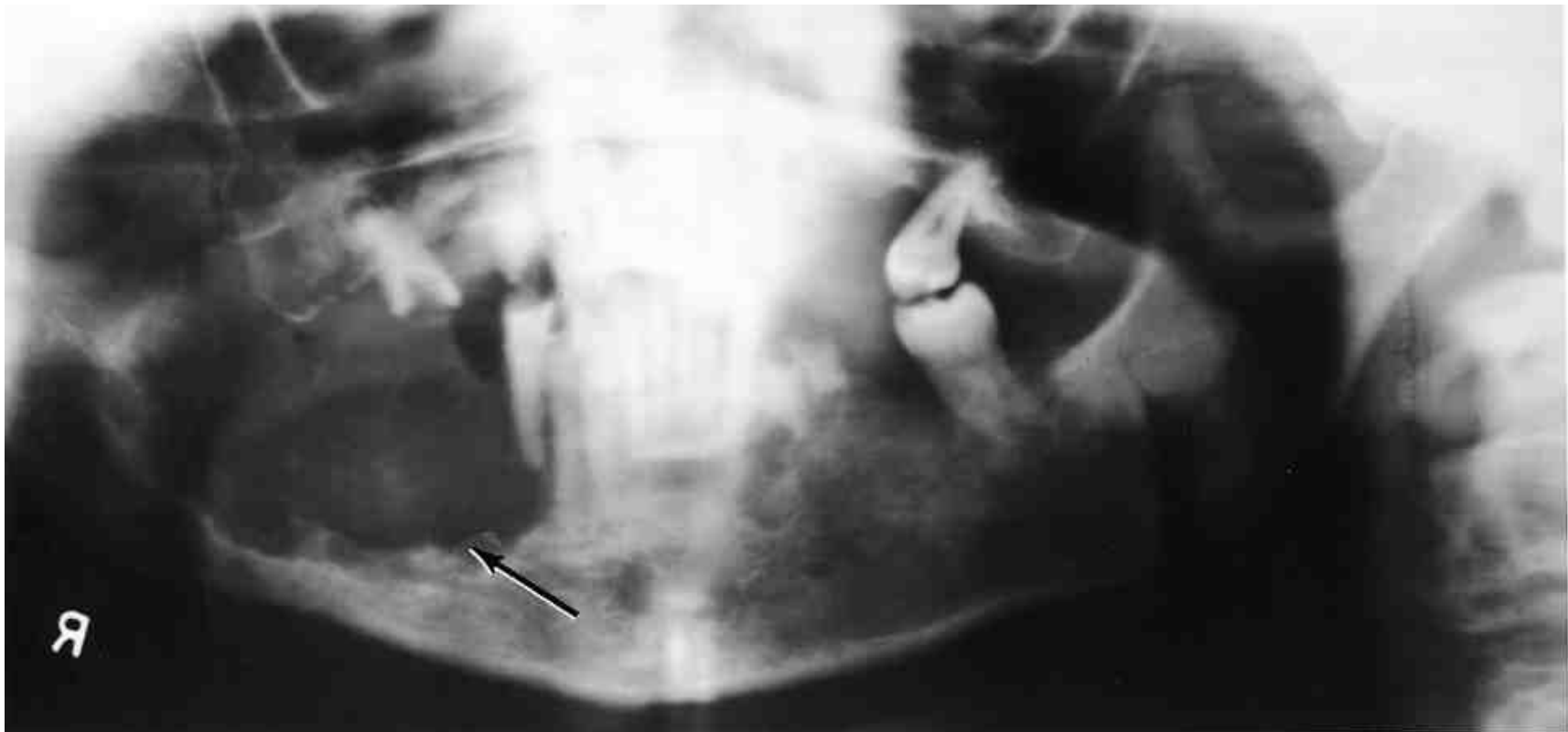


Fig. 16-3

Squamous cell carcinoma producing irregular bone resorption. The lesion also involved the oral soft tissues.



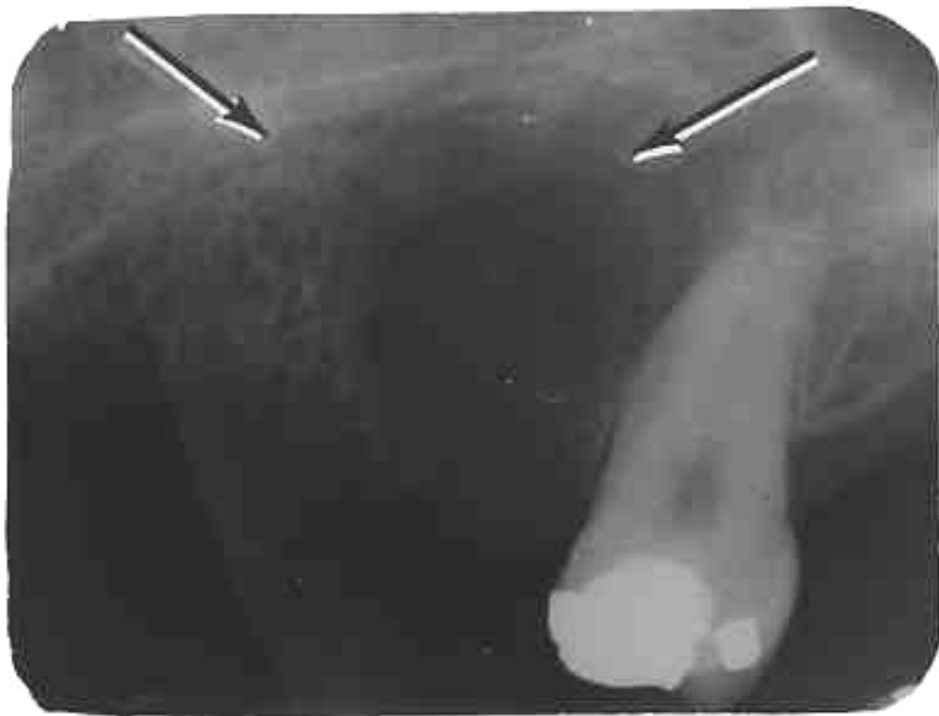


Fig. 16-4

Squamous cell carcinoma of the oral mucosa invades the alveolar bone and produces diffuse destruction of bone mesial to the molar.

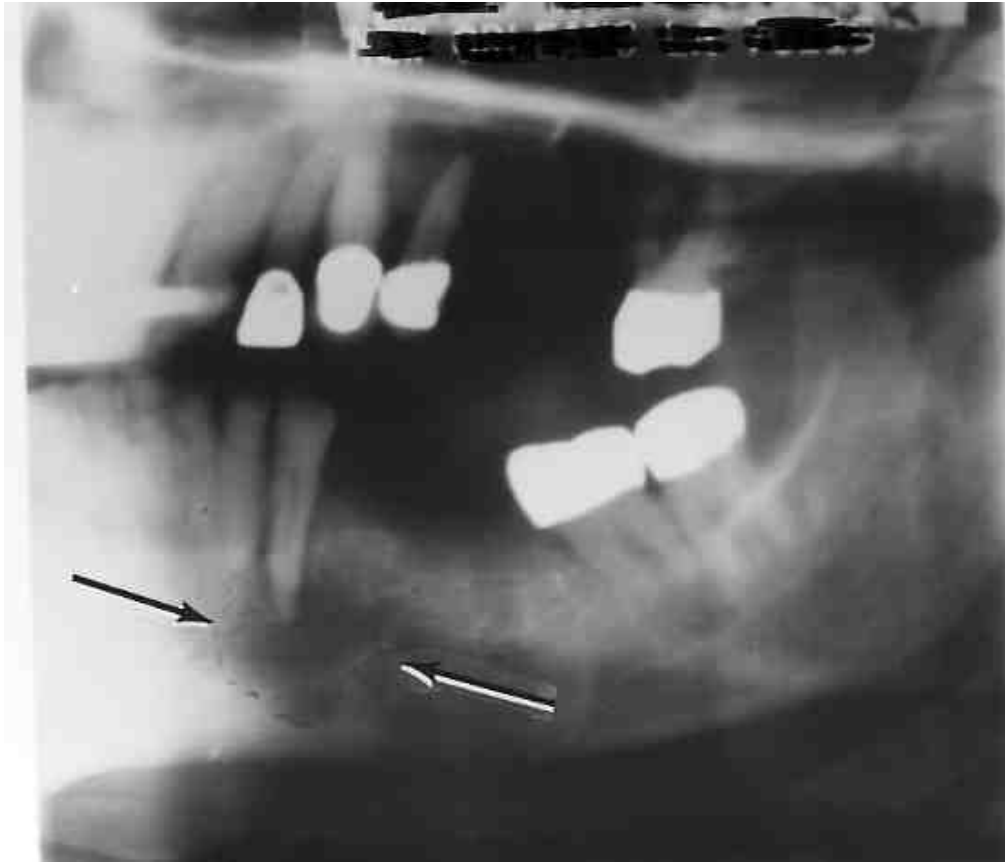
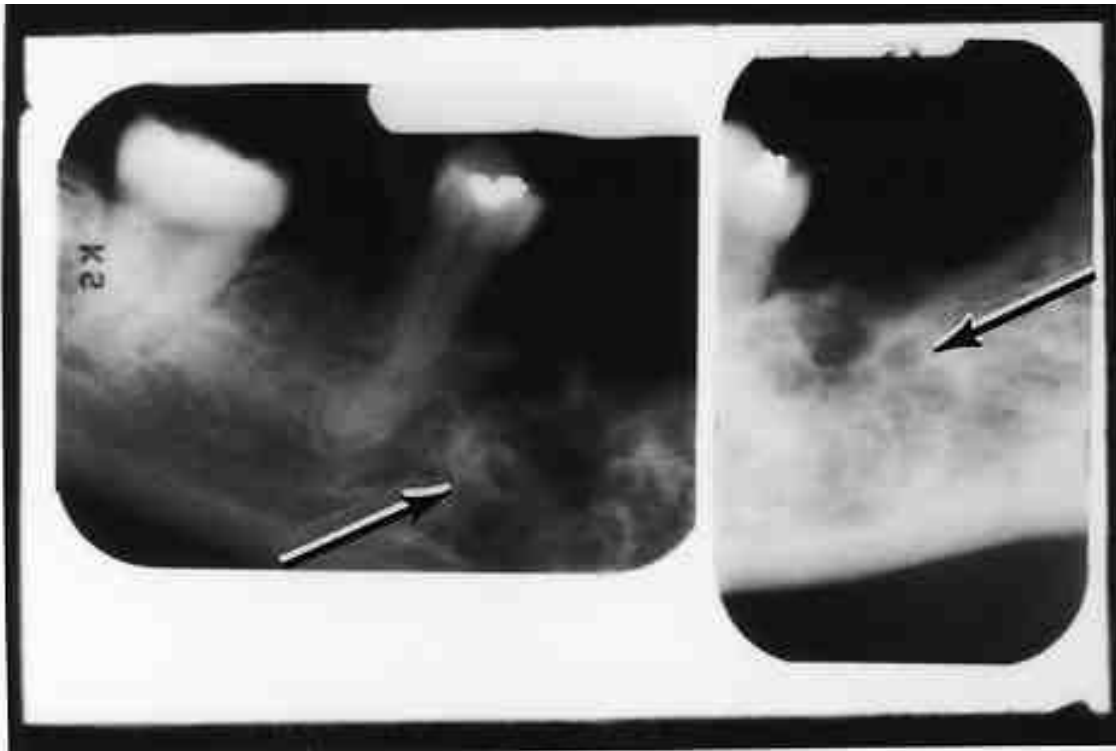


Fig. 16-5

Metastatic carcinoma of the mandibular canine and premolar region in which the primary lesion was a carcinoma of the breast in a 70 year old female.

Fig. 16-6



Metastatic carcinoma.
Destructive radiolucency with recent history of loose teeth caused by metastatic adenocarcinoma.

Fig. 16-7

Metastatic carcinoma.
Primary lesion was in
the breast.

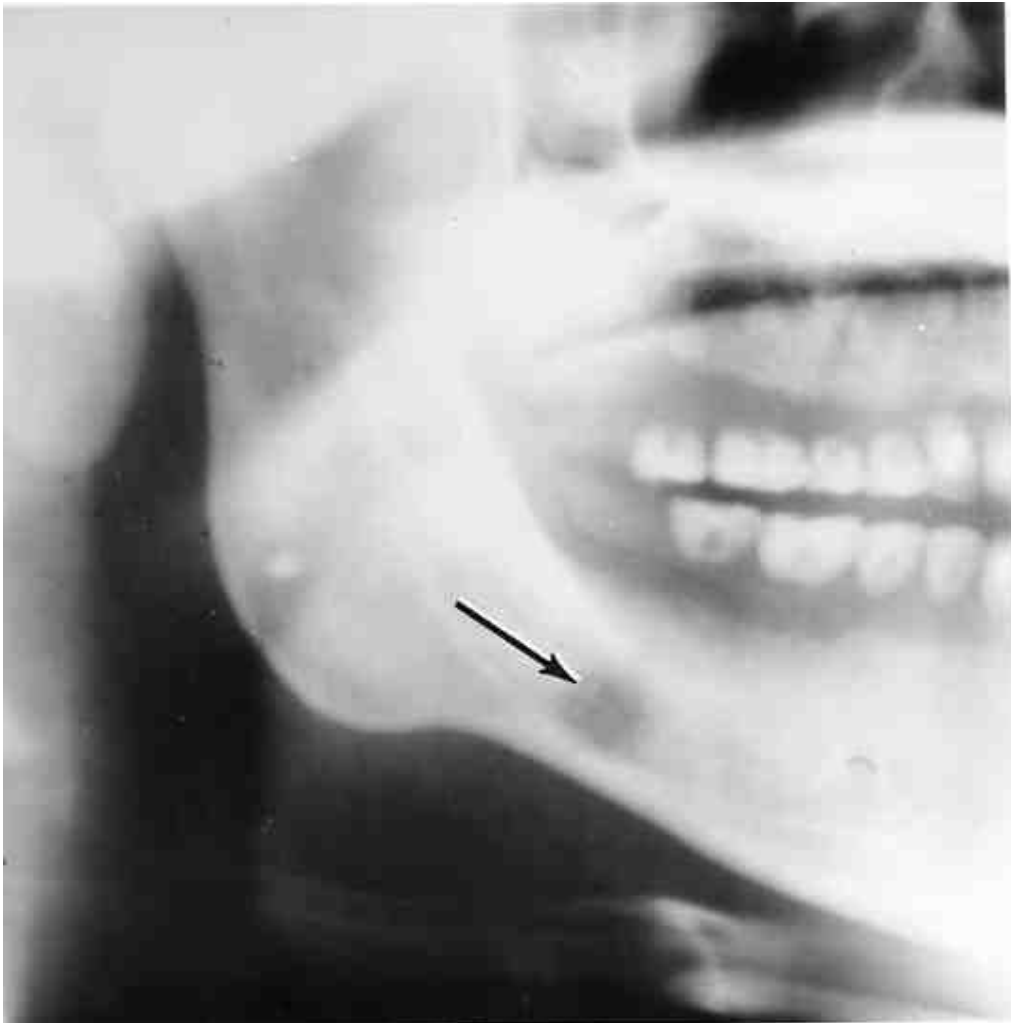


Fig. 16-8

Osteosarcoma of the
osteolytic type
involving the mandible.



Fig. 16-9

Recurrence of osteosarcoma on the right side after surgical treatment. The lesion produces the characteristic sunray appearance.

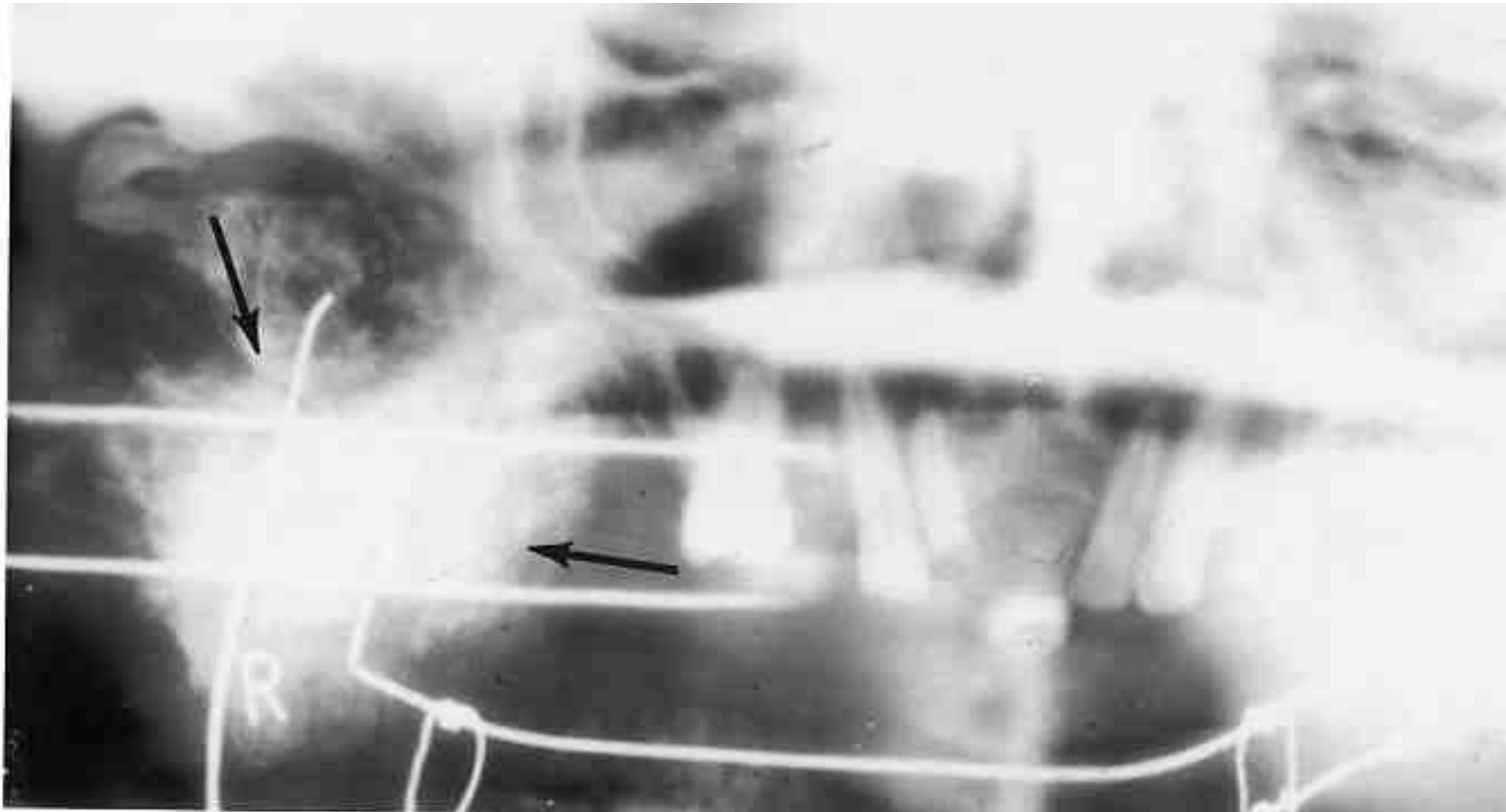


Fig. 16-10

Osteosarcoma of the osteoblastic or sclerosing type in the maxilla.





Fig. 16-11

Osteosarcoma of the osteolytic type showing widening of periodontal ligament space and an apical radiolucency involving the last molar.

Fig. 16-12

Multiple myeloma of the mandibular ramus and body showing widespread destruction of bone.

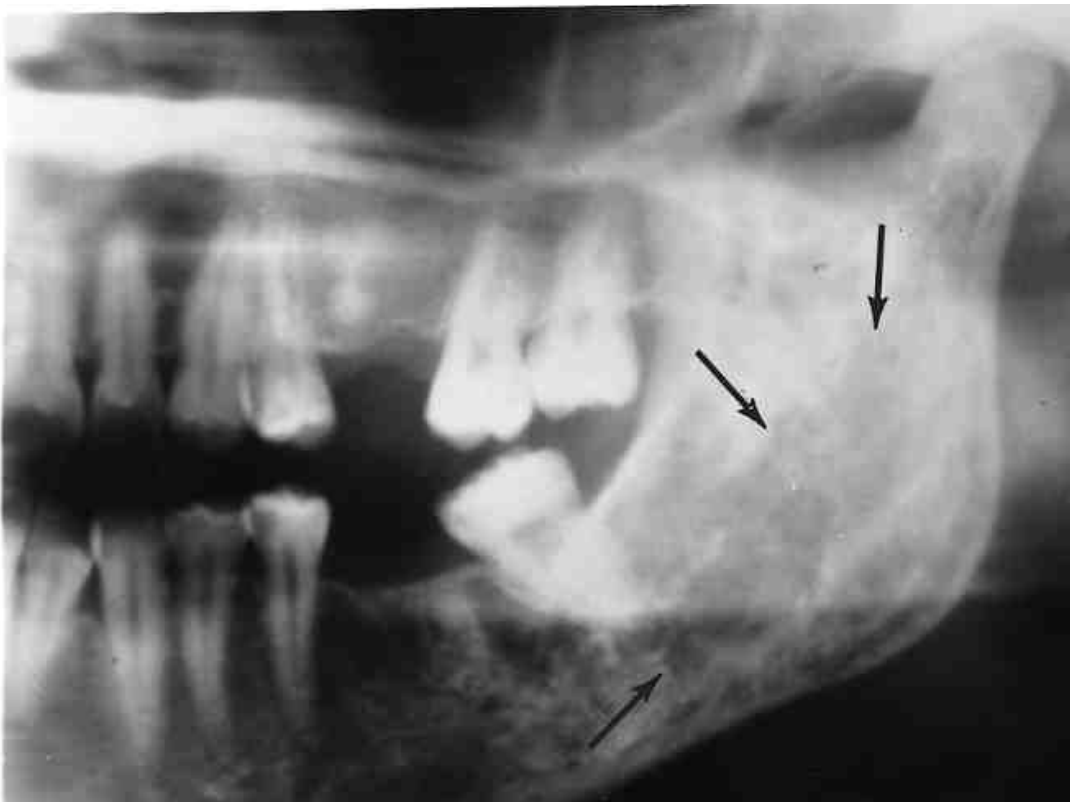


Fig. 16-13

Multiple myeloma
seen as multiple
radiolucent lesions in
skull.





Fig. 16-14

On a postero-anterior skull radiograph, multiple myeloma is seen as multiple radiolucent lesions.

Fig. 16-15

Multiple myeloma in
the ribs and humerus

