



Fig. 3-1

Correct positioning of patient's head in the panoramic machine. Note the slight downward curvative of the occlusal plane and the untilted vertical rami. Notice the sharpness of images of the anterior teeth.

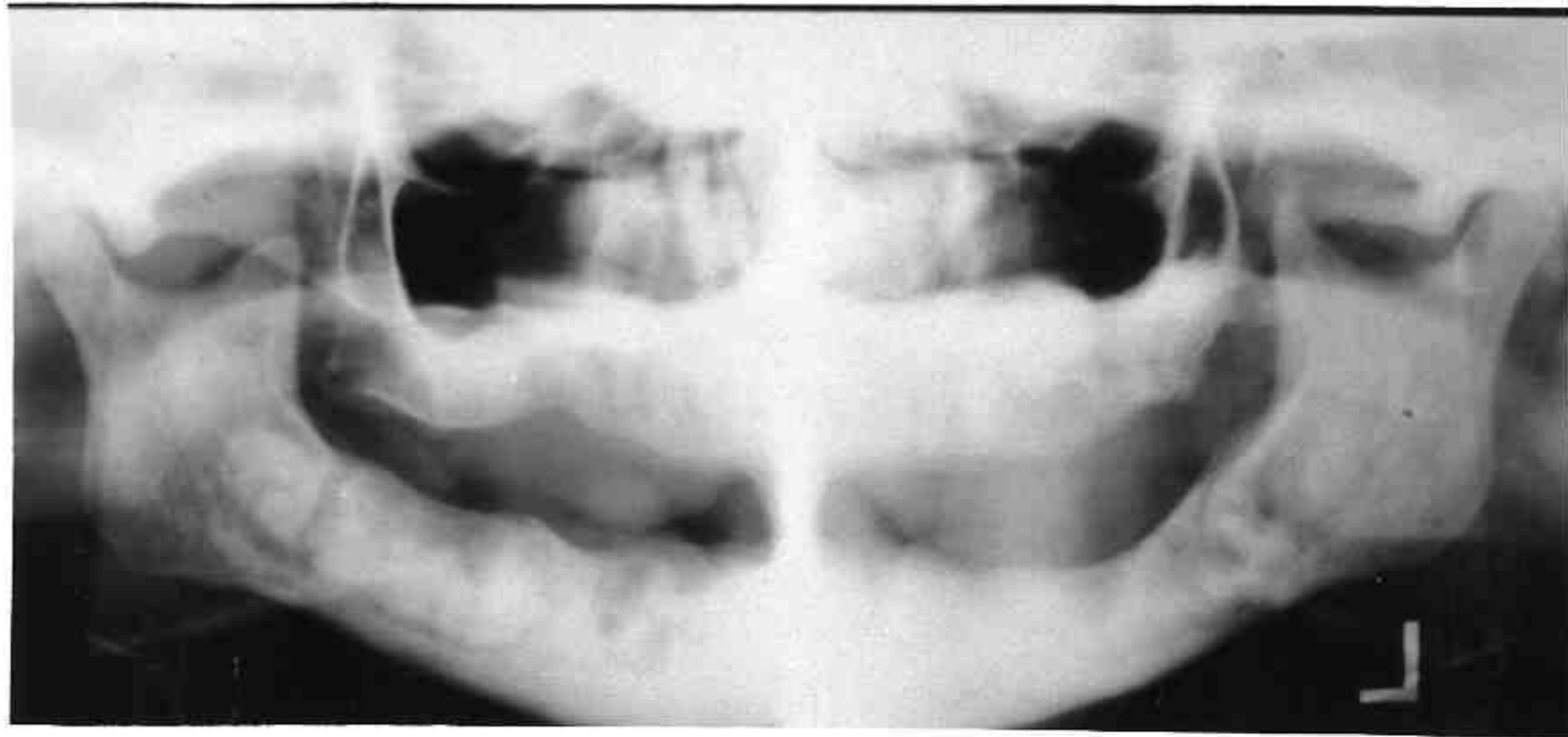


Fig. 3-2

Edentulous patient. Correct positioning of patient's head in the panoramic machine. Note the slight downward curvature of the occlusal plane and the untilted vertical rami. The lesion in the jaws is florid osseous dysplasia (diffuse cementosis).



Fig. 3-3

Patient's head is tilted backwards, that is, the chin is positioned upwards. Note the downward curvature of the occlusal plane. The rami are tilted laterally. The palate is superimposed on the apices of the maxillary incisors.

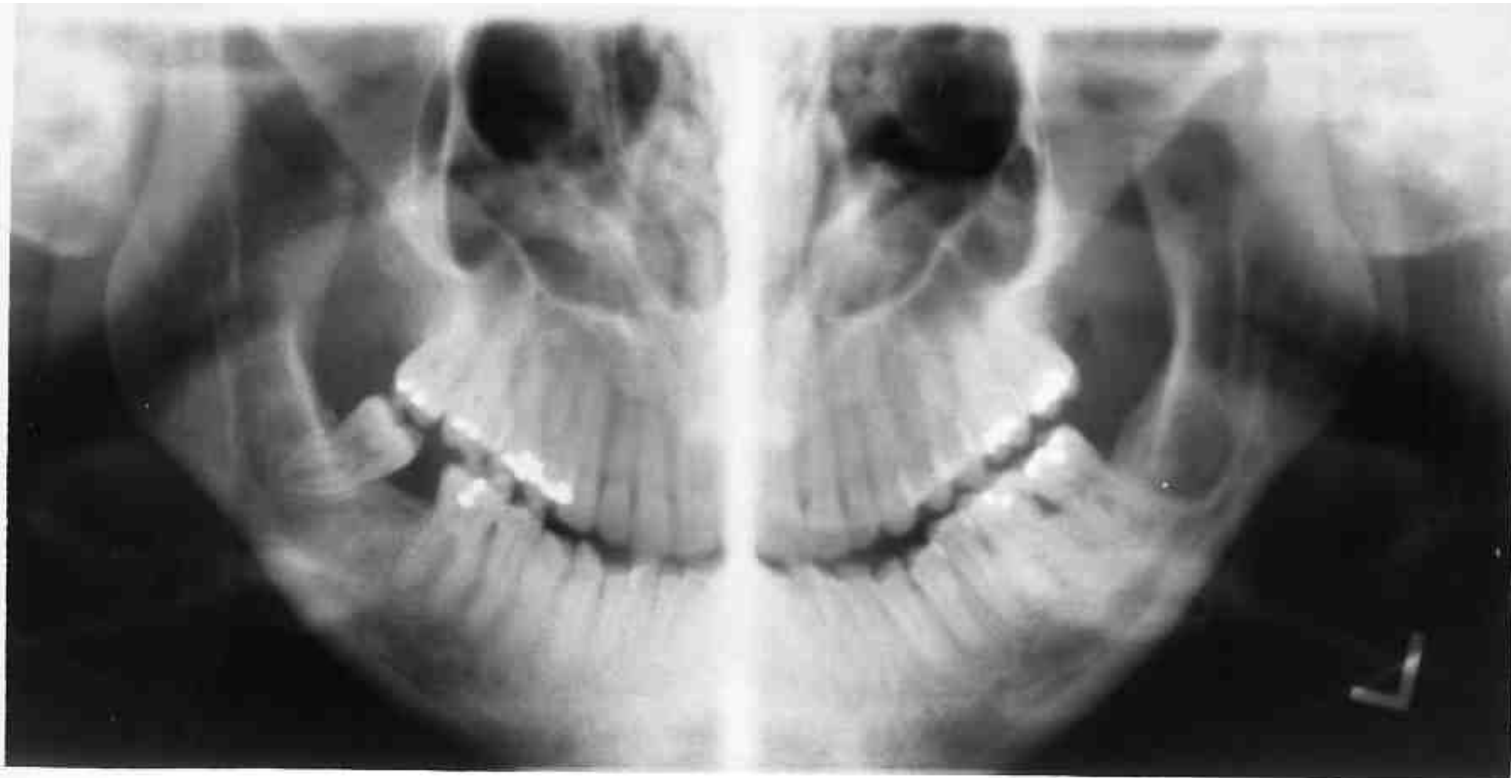


Fig. 3-4

Patient's head is tilted downwards, that is, the chin is positioned too low. Note the upward curvature of the occlusal plane. The rami are tilted medially.



Fig. 3-5

Patient's chin is positioned posterior to the focal trough (zone of sharpness). Note the horizontal magnification and unsharpness of anterior teeth.

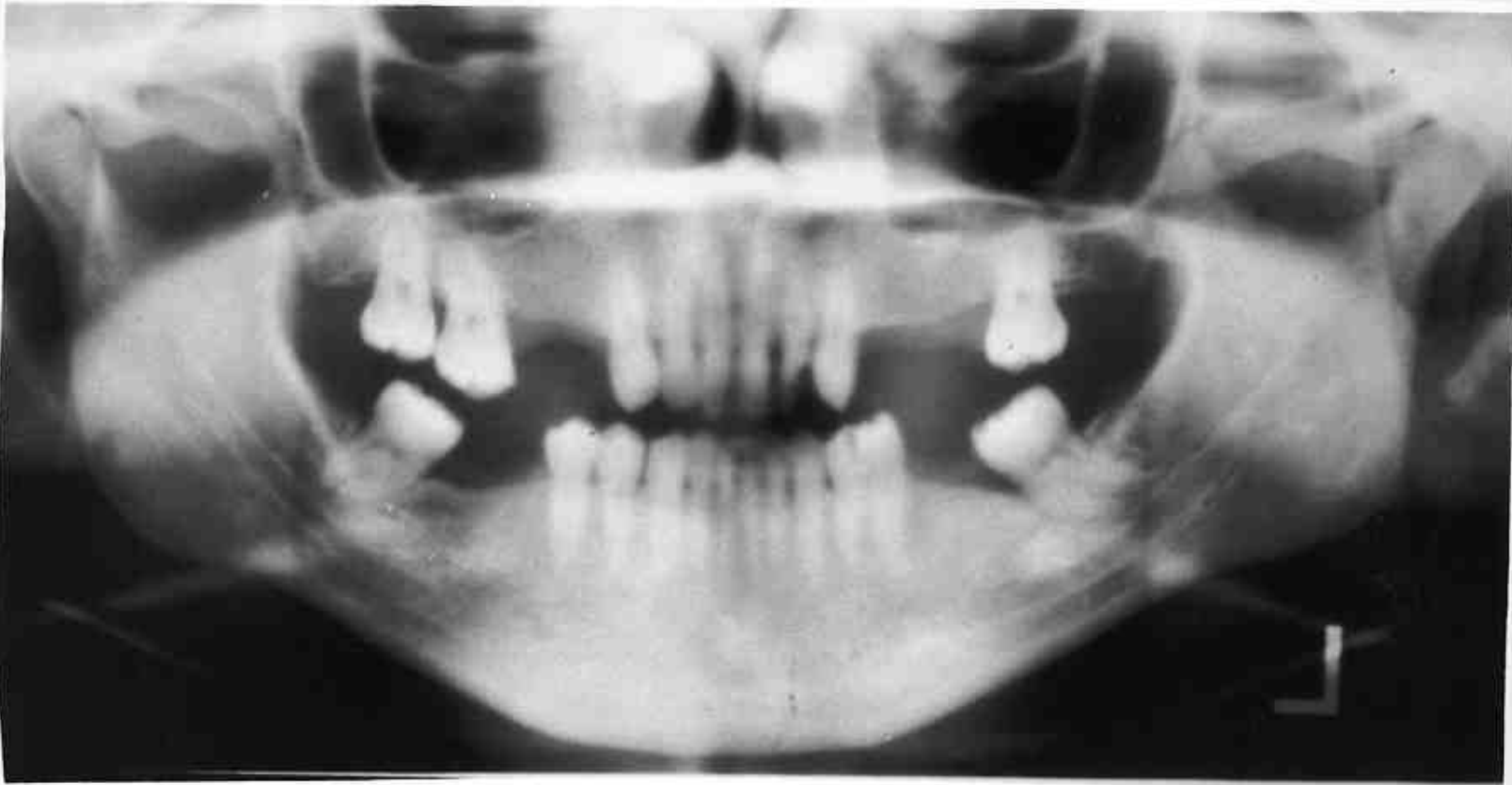


Fig. 3-6

Patient's chin is positioned anterior to the focal trough (zone of sharpness). Note the horizontal demagnification and unsharpness of anterior teeth.



Fig. 3-7

Patient's head is positioned towards one side (laterally) and outside of the focal trough (zone of sharpness), that is, the patient's mid-sagittal plane is not positioned in the middle of the two head positioners. One side of the jaws is horizontally demagnified while the other side is magnified.

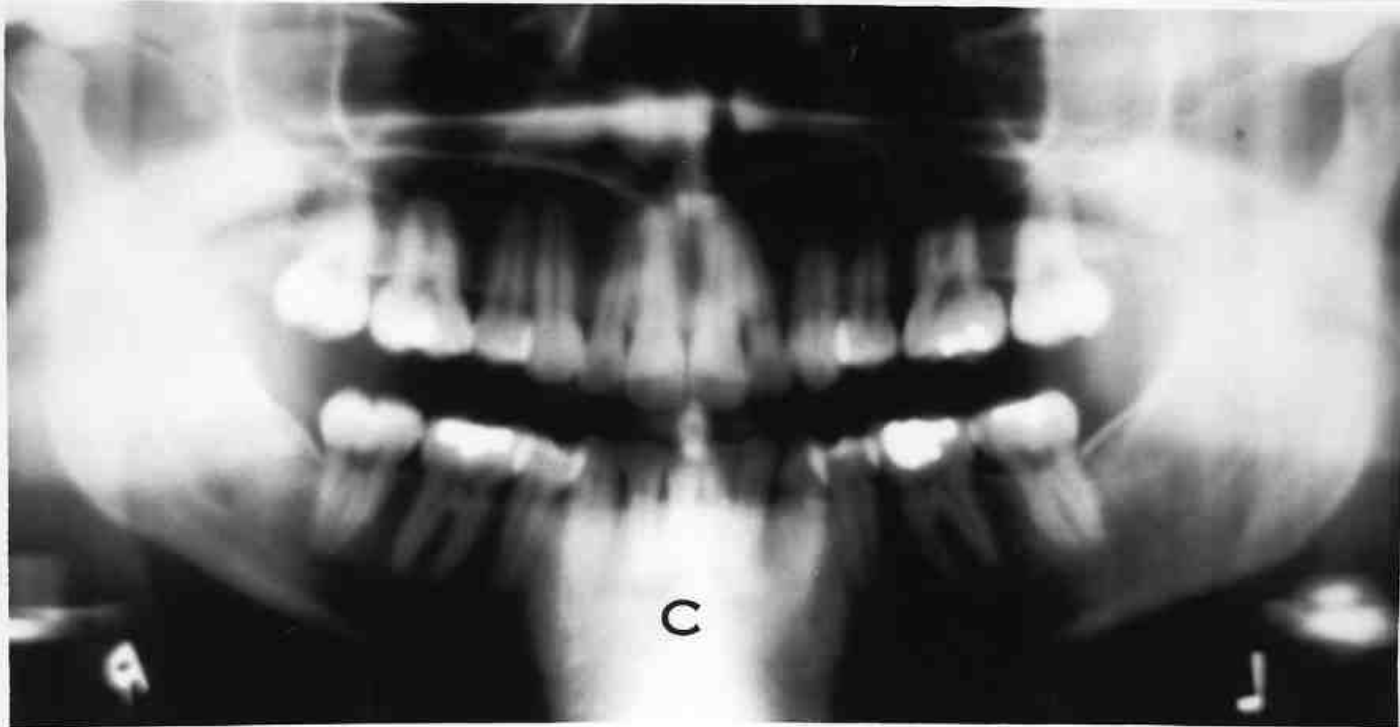


Fig. 3-8

Patient's neck is not in an erect position, that is, the patient is stooping. The ghost image of the cervical spine (C) produces a broad radiopacity in the midline.



Fig. 3-9

Patient's head and neck are placed excessively forward in the panoramic machine resulting in bilateral prominent images of the vertebrae. The vertebrae are prominently seen whenever the neck is positioned too forward. The anterior teeth are horizontally demagnified and unsharp. The patient's head is also tilted downwards. Note the upward curvature of the occlusal plane and the medial tilt of the rami.



Fig.3-10A.

Patient's head is positioned anterior to the focal trough. The excessive anterior positioning has produced horizontal demagnification, giving the illusion of missing anterior teeth.



Fig.3-10B.

The same patient when head is positioned in the focal trough results in the visibility of all the anterior teeth. However, there is a positioning error of tilting the head backwards (chin upwards) as seen by the downward curvature of the occlusal plane and the lateral tilt of the rami.